

THE CORPORATION OF THE TOWNSHIP OF HORTON
BY-LAW NUMBER 2024-41

A By-law to amend By-law Number 2010-14 of the Corporation of the Township of Horton, as amended.

PURSUANT TO SECTION 34 OF THE PLANNING ACT, R.S.O., 1990, c.P. 13, THE TOWNSHIP OF HORTON HEREBY ENACTS AS FOLLOWS:

1. THAT By-law Number 2010-14, as amended, be and the same is hereby further amended as follows:
 - a) Schedule "A" is amended by rezoning lands described as Part of Lot 20, Concession 6, in the Township of Horton, from Rural (RU, RU-E9), and Extractive Industrial Reserve (EMR) to Extractive Industrial – Exception Two (EM-02) as shown on the Schedule "A" attached hereto.

2. THAT save as aforesaid all other provisions of By-law 2010-14, as amended, shall be complied with, EXCEPT as amended below:
 - a) 13.2.(b) Yards (minimum):

	Abutting Industrial Zone	Abutting Other Zones
i. Front Yard Depth	22 metres	30 metres
ii. Interior Side Yard Width	15 metres	15 metres
iii. Exterior Side Yard Width	15 metres	15 metres
iv. Rear Yard Depth	15 metres	15 metres

3. This by-law shall come into force and take effect on the day of final passing thereof.

This By-law given its FIRST and SECOND reading this 20th day of November, 2024.

This By-law read a THIRD time and finally passed this 20th day of November, 2024.

DEPUTY MAYOR Daina Proctor

CAO/CLERK Hope Dillabough

THE CORPORATION OF THE TOWNSHIP OF HORTON
BY-LAW NUMBER 2024-41
SCHEDULE "A"

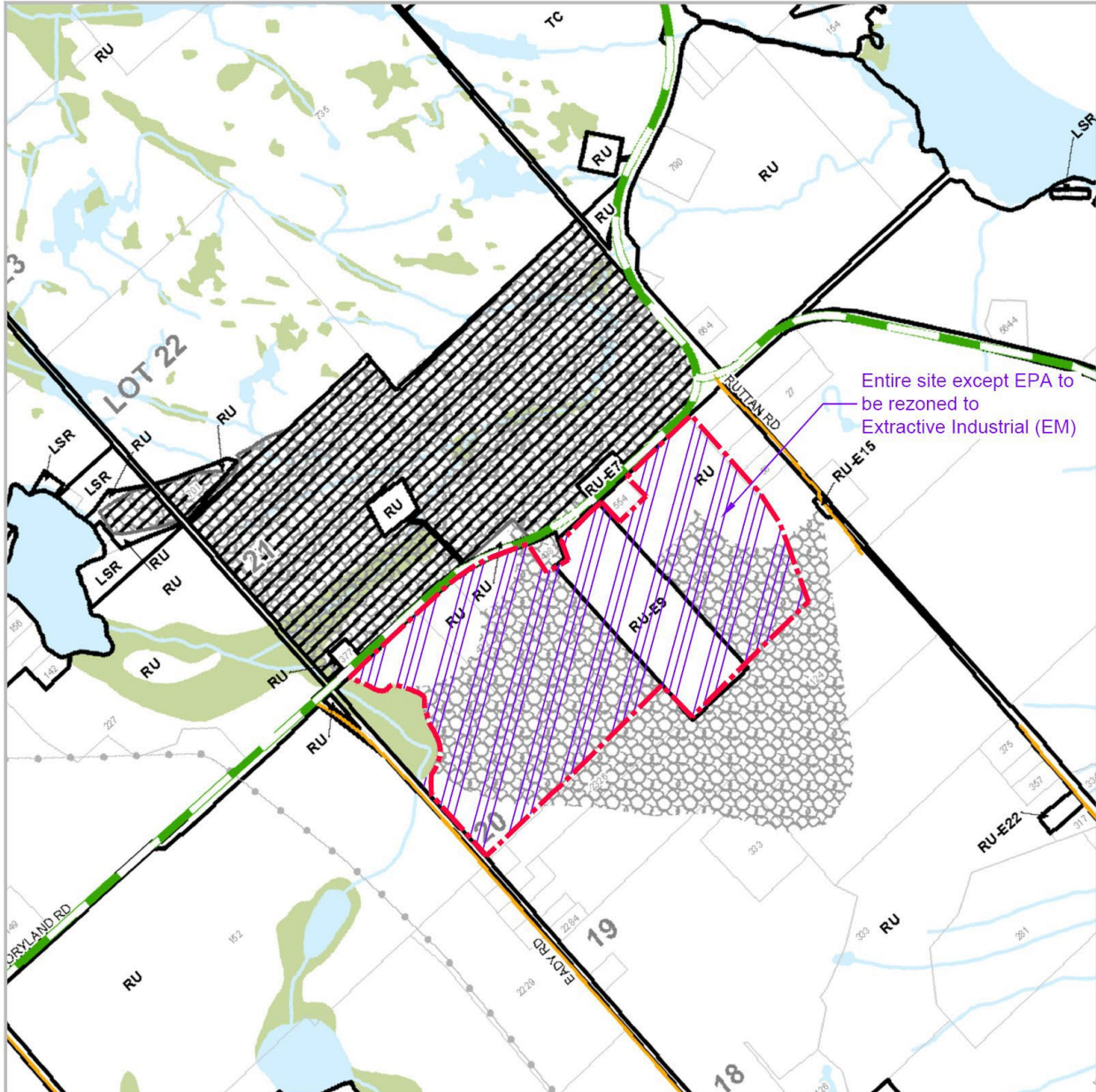



Figure 9
**Horton Township
 Zoning By-law
 2010-14**
 Schedule 'A'

R.W. Tomlinson Limited
 Storyland Property
 Storyland Road
 Horton Township
 County of Renfrew

LEGEND
 Subject Lands

-  Environmental Protection
-  Extractive Industrial Reserve (EMR)
-  Extractive Industrial (EM)
-  LSR Limited Service Residential
-  TC Tourism Commercial
-  RU Rural

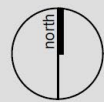
Base Map Source:
 Township of Horton Zoning By-law Schedule 'A' (Map Consolidation Jan.11, 2011)

DATE: March 2024

SCALE: 1:15,000

FILE: 9137W

DRAWN: DGS



K:\137W RENFREW TWP HORTON\RPT\HORTON TOWNSHIP ZONING BY-LAW MARCH2024.DWG

MHBC PLANNING
 URBAN DESIGN
 & LANDSCAPE
 ARCHITECTURE
 200-540 BINGEMANS CENTRE DR. KITCHENER, ON, N2B 3X9
 P: 519.576.3650 F: 519.576.0121 | WWW.MHBCPLAN.COM